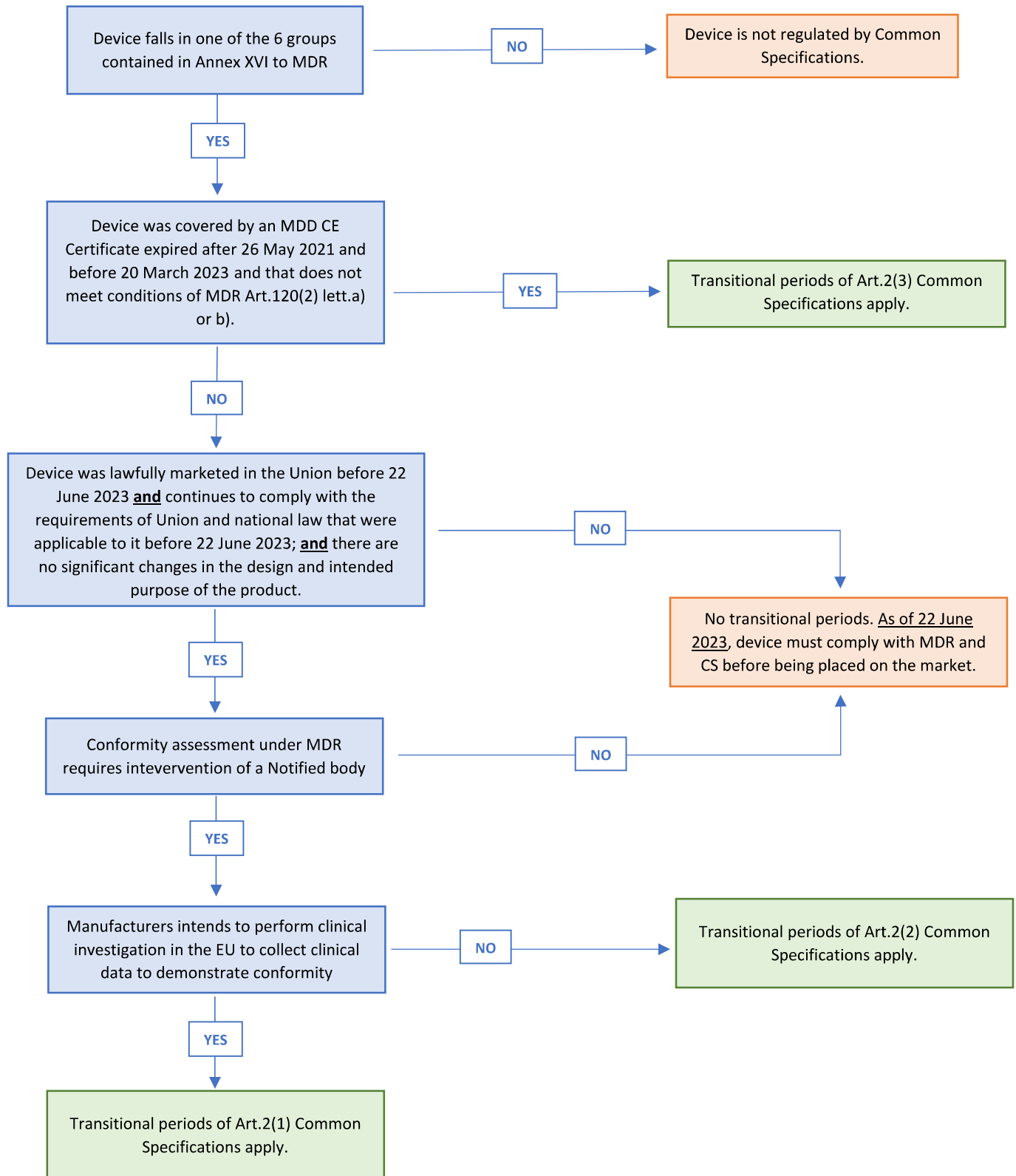


TRANSITIONAL PROVISIONS ANNEX XVI COMMON SPECIFICATIONS



IMPORTANT: Dual-purpose devices (i.e. devices that have both a medical and a non-medical intended purpose) must fulfill cumulatively MDR and CS requirements. With regards to transitional provisions, both the ones set out in MDR Art.120 and those set out in the CS must be respected. In case the applicable transitional periods differ, the stricter one must be respected.